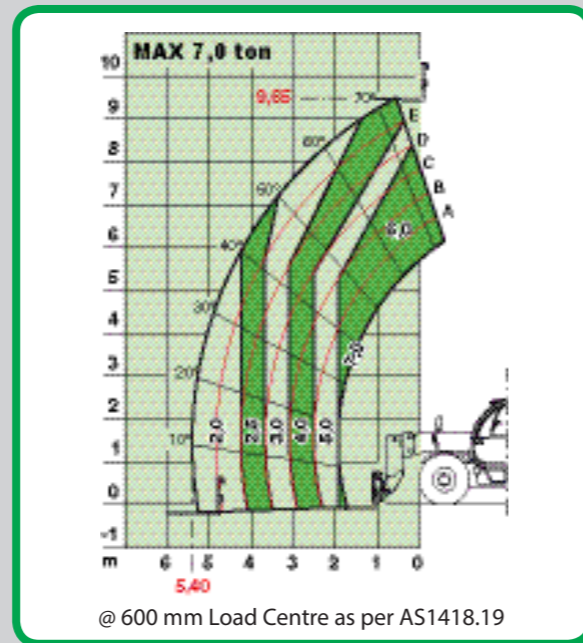
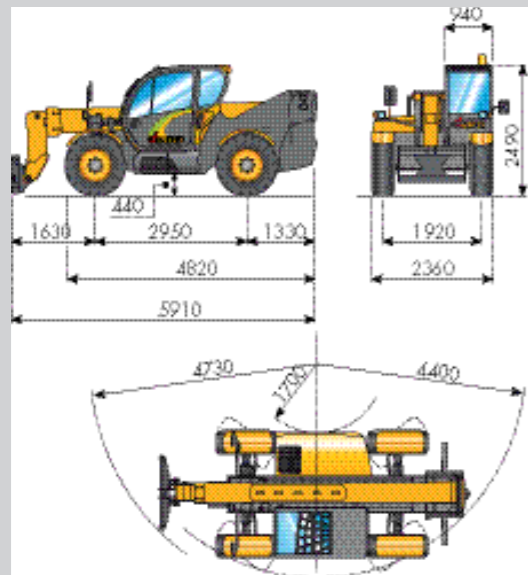


Cotton PRO 75.10TA



DIECI

TELEHANDLERS



PERFORMANCES

- Maximum capacity: 7.500 kg
- Capacity at maximum height on tyres: 4.000 kg
- Capacity at maximum boom extension on tyres: 2.000 kg
- Maximum lifting height on tyres: 9.650 m
- Maximum horizontal boom extension: 5.40 m
- Boom extension at maximum height: 0.15 m
- Fork tilting angle (carriage rotation): 134°
- Towing force: 7.300 daN
- Maximum allowable slope: 40%
- Total empty weight: 11.600 kg
- Max speed: 40 km/h



TRANSMISSION

- Rexroth Hydrostatic Transmission with variable displacement pump
- Constant four wheel drive
- Inching pedal for controlled forward movement
- Servo controlled
- 1 speed high range 0 - 40 kms
- 1 speed low range 0 - 12 kms



HYDRAULIC SYSTEM

- Three gear pumps load sensing: 160 l/min
- Max working pressure: 240 bar
- Proportional control joystick: 3 in 1
- 16 Litre Hydraulic coil cooler located at rear of machine, with auto reversing fans



DIFFERENTIAL AXLES

- Dana Spicer axles
- Self-locking differential on front axle (limited slip 45%)
- Type of steering: Modes, 4 wheel / 2 wheel / crab
- Front axle: Dana Spicer: equipped with 9° ± frame levelling
- Rear axle: Dana Spicer: oscillating
- Foot brake: Oil bath wet disk on the front and rear axle
- Park brake: Electric switch apply
- Auto apply park brake when engine shut down (spring applied hydraulic release)



TYRES

- Tyres: Mitas 18 x 22.5" MPT 06 AGRI



REFUELING (litre)

- Hydraulic system (total): 160 L
- Fuel tank: 120 L



ENGINE

- IVECO NEF - TA - 94 kW (Tier 3)
- Maximum Power: 94 kW (128 hp) @ 2200 rpm
- Operating principle: four-stroke, diesel engine
- Cylinder number and layout: 4, vertical in line
- Displacement: 4485 cm³ - Turbo compressor
- Cooling system: water
- Engine pre-cleaner



STANDARD INCLUSIONS

- Generation 3 agricultural comfort cab, ROPS/FOPS approved cabin, with front glass protection offers 360° driver visibility
- Australian designed air conditioning with cabin filtration system
- Visual and audible longitudinal stability indicator and limiter to prevent overload
- Mechanical 60 second overload as per Australian standards
- Adjustable steering column
- Safety lock switch for quick steering mode selection
- Hour metre/tacho
- Digital speedometer
- Temperature gauge monitoring system with shutdown protection
- Side shift carriage 200mm
- Clean air intake bonnet, with mesh
- Hydraulic reversible fan
- Australian made radiator 5 fin per inch with inline tube
- Kenwood CD player
- Window tint
- Low fuel warning light
- Full road lighting kit with amber rotating light, number plate light
- Left and right rear vision mirrors
- Reverse alarm
- Emergency stop in cabin
- Battery isolation switch
- One fire extinguisher in cab
- Air suspension driver seat with lower back lumbar support and adjustable arm rest
- Safety interlock switch in driver's seat
- One 9kg foam and one 9kg water fire extinguisher fitted to the rear counter weights
- Self-leveling carriage with 146° carriage rotation
- Work light (1 front, 1 rear) of cabin
- Dieci patent design boom cradle
- Hydraulic couplers for attachments on head of boom
- Manual quick hitch with floating forks 200mm x 60mm x 1200mm
- Boom angle indicator, Tow hook
- Safety & risk assessment decal kit
- Engine and transmission protection guards
- Maximum capacity limiter prearrangement for freely suspended loads for use with jibs or hook (if required)

Additional options available on request



DIECI

TELEHANDLERS

AWD Group | 25 Garner Place, Ingleburn NSW 2565 Australia
Phone 1300 888 479 | sales@dieci.com.au | www.awdgrp.com.au

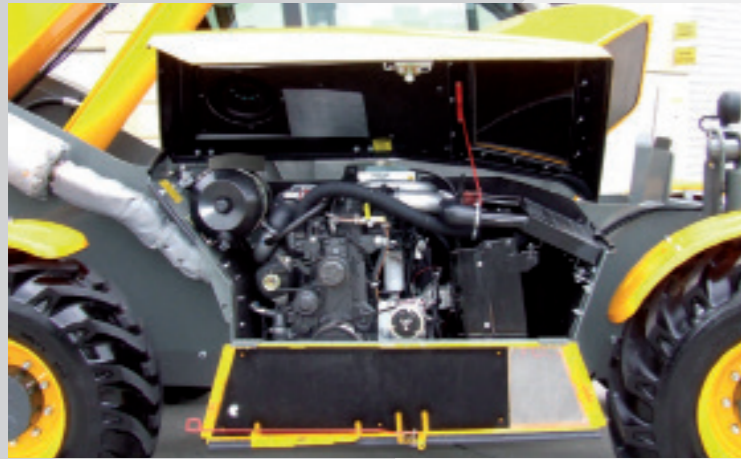
Cotton Pro 75.10TA



presents the *COTTON PRO*



Dieci, leaders in the manufacture of telescopic handlers, present The Cotton Pro 70.10TA, part of the tailor made series from Dieci Australia. Designed and built specifically for Australia's Cotton Industry, this model includes many of the innovative ideas for which Dieci is renowned.



Easy access to side mounted 128hp engine



Spacious cabin for improved driver comfort



Engine temperature monitoring system with shutdown protection



120Amp battery along with battery isolation



Independent hydraulic coil cooler relocated behind cab with twin auto reversing cooling fans



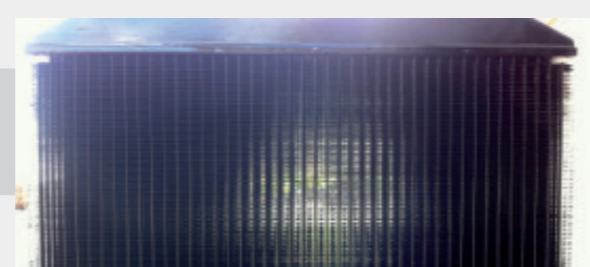
Modern integrated instrument panel with load management readout



Clean air intake bonnet with fine mesh



Generation 3 agricultural comfort Cab offers 360° visibility



Australian made radiator 5 fins per inch with inline tube



Hydraulic reversing fan on engine radiator



12V system 2 stage 90amp alternator with fibre sock cover for protection



Turbobank heat protection from turbo to end of exhaust pipe



Starter circuit with marine solenoid electrical system with marine circuit breakers replacing main fuses in engine bay



High visibility side shift carriage



Under chassis full length drive line protection



Air conditioning with automatic reversing condenser fan every 20 mins along with protective cover and stainless steel mesh